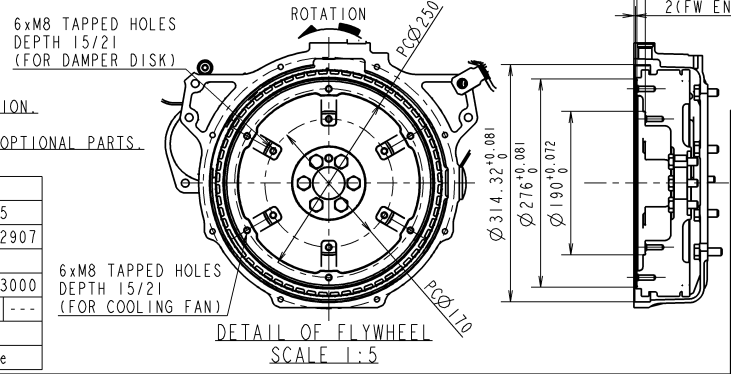
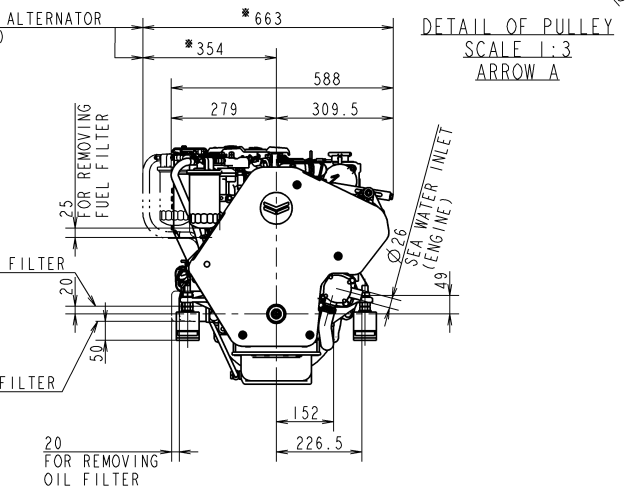
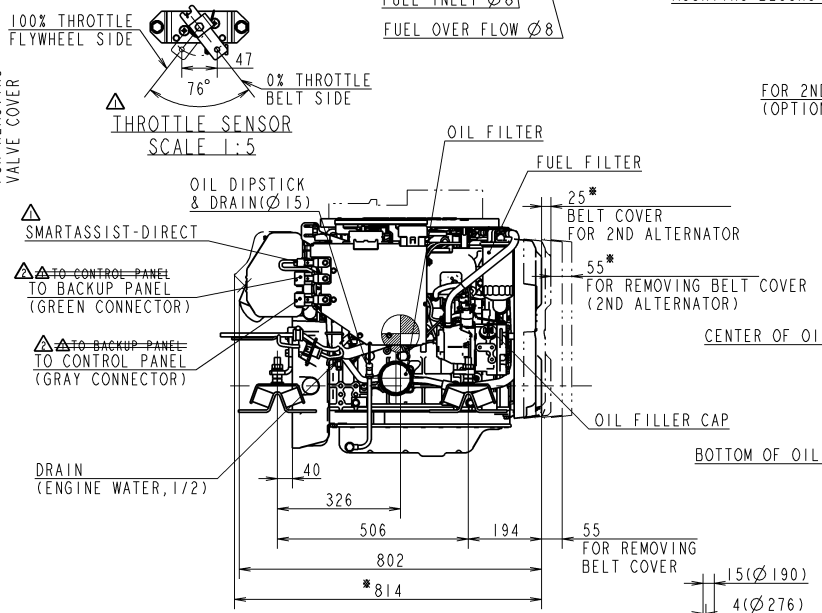
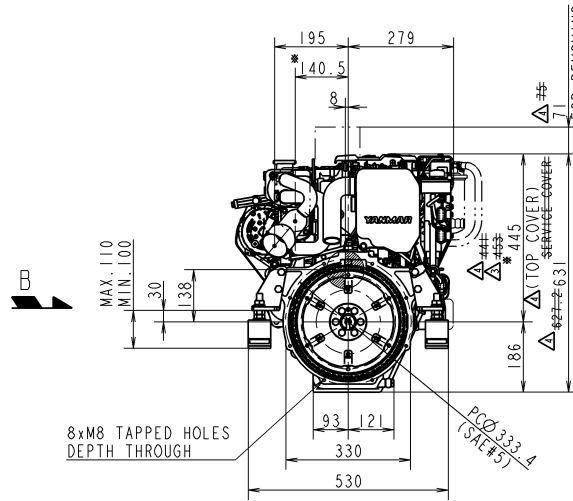
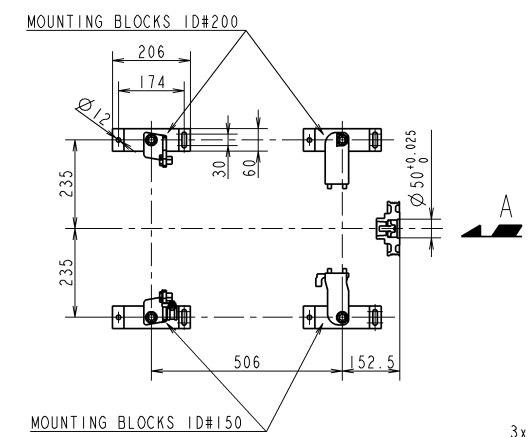
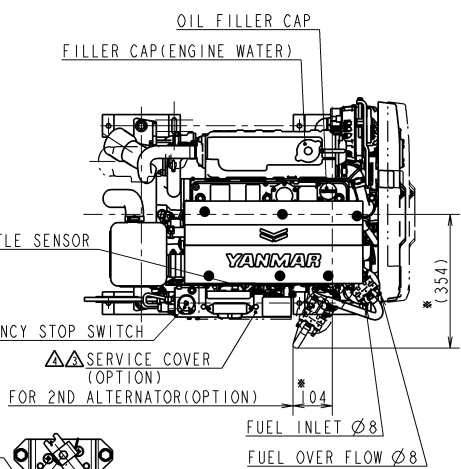
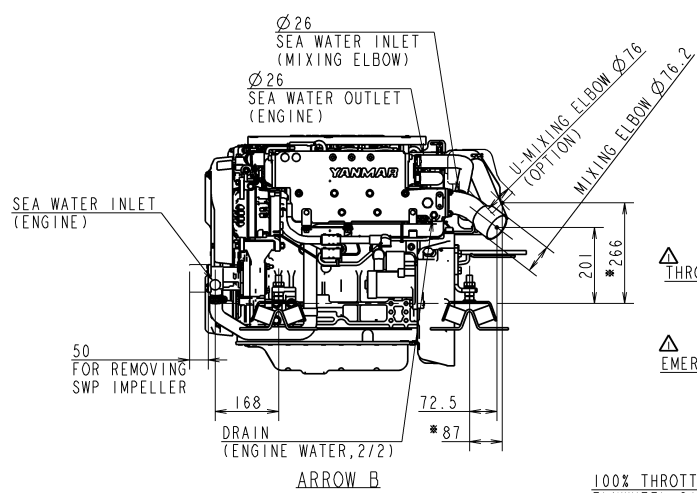


CAREER

※1形 YDSBD-14004に本体部を継ぎ足す。
 1改(2014.6.30)
 ・ストロークセンサ位置追加
 ・ベルトトレイン3Dモデル(フロント放水P用)追加
 ・緊急停止スイッチ位置追加
 ・各コネクタ位置追加 (YDSBD-14012)(修田)
 2改(2014.7.18)
 ・コネクタ位置の修正を訂正する(YDSBD-14015)(修田)
 3改(2016.4.11)
 ・サービスカットオフションを規定(YDSBD-16002)(修田)
 REV.4(2018.3.20) CHANGE TOP COVER AND BELT COVER (YDSBD-18002)



NOTE
 1. MOUNTING BLOCKS ARE COMPRESSED ABOUT 4mm BY ENGINE WEIGHT.
 2. DIMENSIONS OF MOUNTING BLOCK IN THIS DRAWING ARE WITHOUT ANY DEFORMATION.
 3. THE FIGURES MARKED WITH * SHOW THE DIMENSIONS WITH U-MIXING ELBOW OR OPTIONAL PARTS.
 4. ● SHOWS THE CENTER OF GRAVITY.

SPECIFICATIONS			
Model		4JH57	4JH45
Continuous Power (ISO 8665)	kW/min ⁻¹	38.1 / 2907	30.1 / 2907
Fuel Stop Power	Propeller shaft (ISO 8665)	kW/min ⁻¹	---
	Crankshaft (ISO 8665)	kW/min ⁻¹	41.9 / 3000 33.1 / 3000
Reduction ratio		---	---
Dry mass	kg	Approx. 220	
Direction of Crankshaft rotation		Counter-clockwise	

SEC. MANAGER		MODEL		4JH 57		4JH 45		SCALE		1:10	
CHECKED		SPECIALIST		QTY		-		MATERIAL			
DESIGNED		DRAWN		DATE: Y.M.D		NAME		OUTLINE, 4JH57/45			
Y. Nuta		A. Hori		2014.3.17							
								CODE		B2-29675-0011	
YANMAR CO., LTD. DEVELOPMENT DIV.								REV. 4		A2	